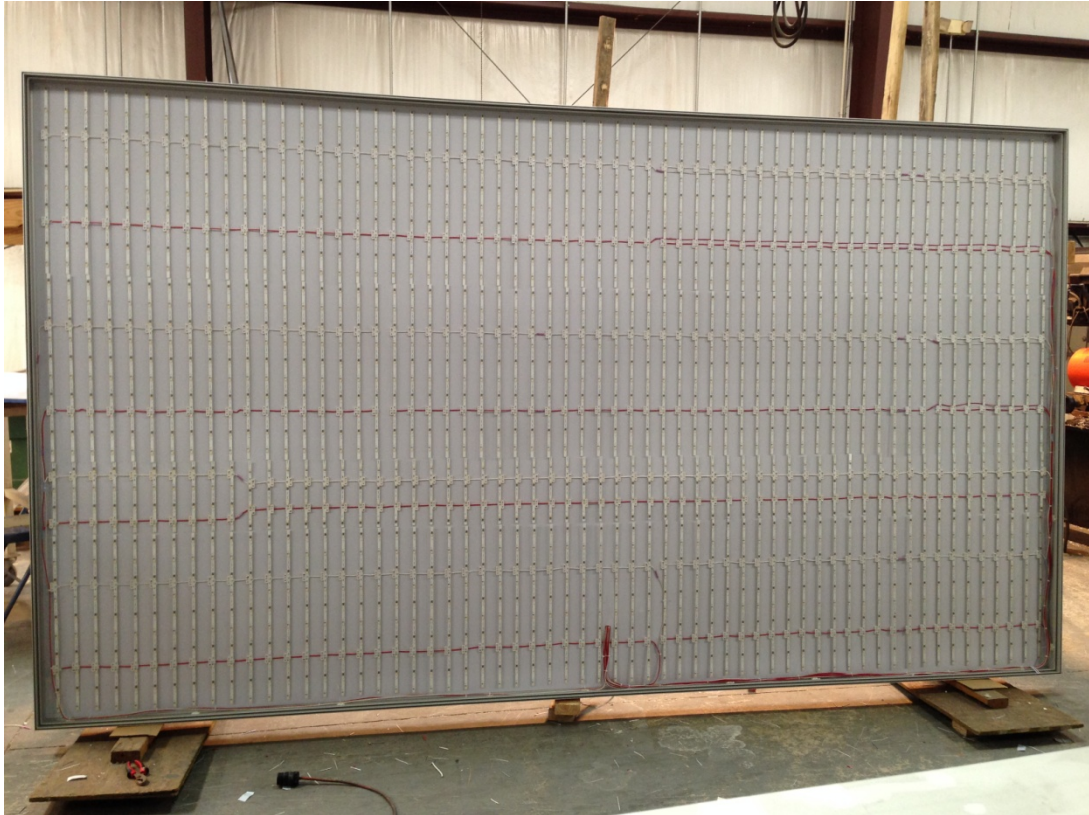


Single Side LED Light Box

Frame & Graphic Assembly Instructions



Single Side LED Light Box Frame Graphic system

Max. 110v; 5 amp power required minimum.

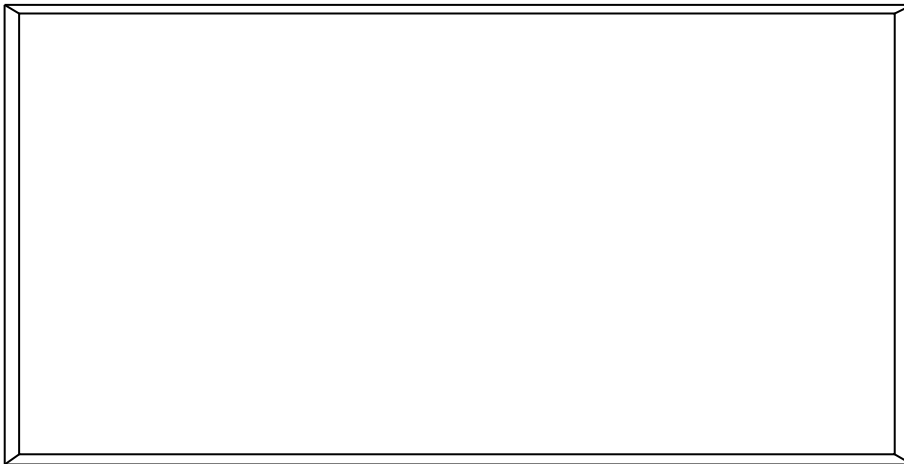
143" wide x 81" high

Diagram for Assembly

(Front View)

#1

#4



#2

#3

Back side View with inner supports (one vertical, one horizontal):



Carefully open and unpack all parts on skid.



Typical Skid with SSLED frame and components packaged. Inspect carefully upon arrival.

The following parts for the frame are inside skid:

- Frame with inner supports as required.
- LED Light blanket back panel.
- Wall Mounting Angle Brackets
- All locks, connecting hardware, tools required along with spare parts in bag packed with power supplies.
- Power supply assembly rack
- Plastic bag containing spare hardware, tools, plastic ties.
- Installation instructions, gloves for installing graphic into frame system.



PHOTOS BELOW FOR ASSEMBLY GUIDANCE

Single Side frame showing splice connectors



Power Supply Rack (Step 7)



LED Fabric Light blanket (Step 8)

Assembly Instructions

Not all steps will apply to this frame.

- 1) Clean your hands prior to handling the fabrics to avoid dirt, debris getting on the fabric.
- 2) Prepare the floor area (preferably clean carpet or flat area to layout the frames with space to walk around the perimeter.
- 3) Assemble the frames four sides per the diagram supplied. Connect all the frame sections together per the diagram above. Then install the inner supports to the back side of the frame. Notice that some of the supports connect at the splice joints (see photo below, right) to provide stability to the frame when hanging. Tighten all set screws in place and make sure the frame is square and ready to hang on the wall.
- 4) Attach the inner supports as shown and secure all locks before proceeding. Make sure all mitered corners match straight and flush to avoid sharp edges which are dangerous and can snag and damage fabric. **CAUTION: Frames have sharp edges. Use care when assembling and handling the frame parts. Make sure all corner locks, joint splices are firmly tightened before moving the frame into standing position.**



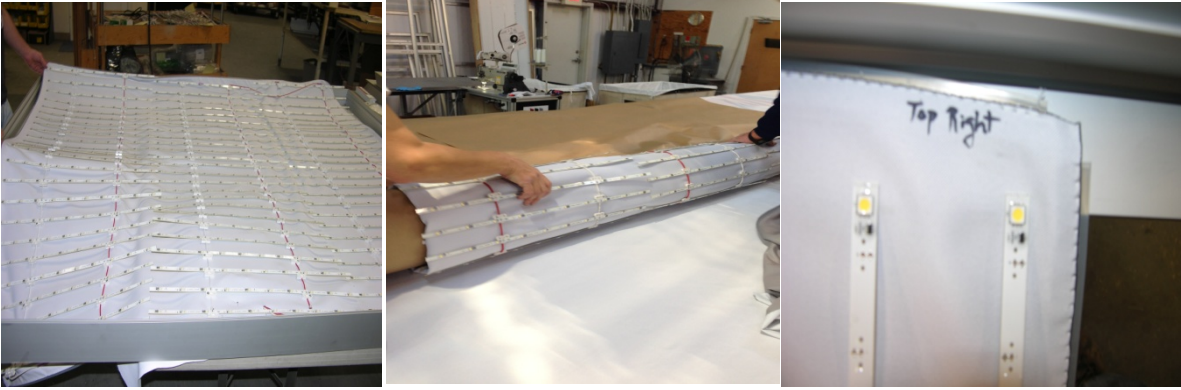
Above left- Backside of typical frame; For illustration purposes only**

5) Install the wall mounting hangers onto the wall using the fasteners and anchors provided. Evenly space them apart across the top and bottom. (Minimum of 6 hangers across the top, but can use more if necessary). See details on wall mounting instruction sheet provided as part of this package.

6) Hang the frame (will take several people to handle the frame) onto the wall hangers and secure in place with the set screws into the frame groove as noted. See illustration below. The photo shows the way the hangers are used to support the frame. The number of hangers used depends on the spacing of supports.



7) Install the power supply rack onto the frame using the Allen wrench and straight locks to secure them in place near the 110v outlet. Check and align all wires from the power supplies to the light blanket before securing the LED light blanket. See more details below for wiring the frame.

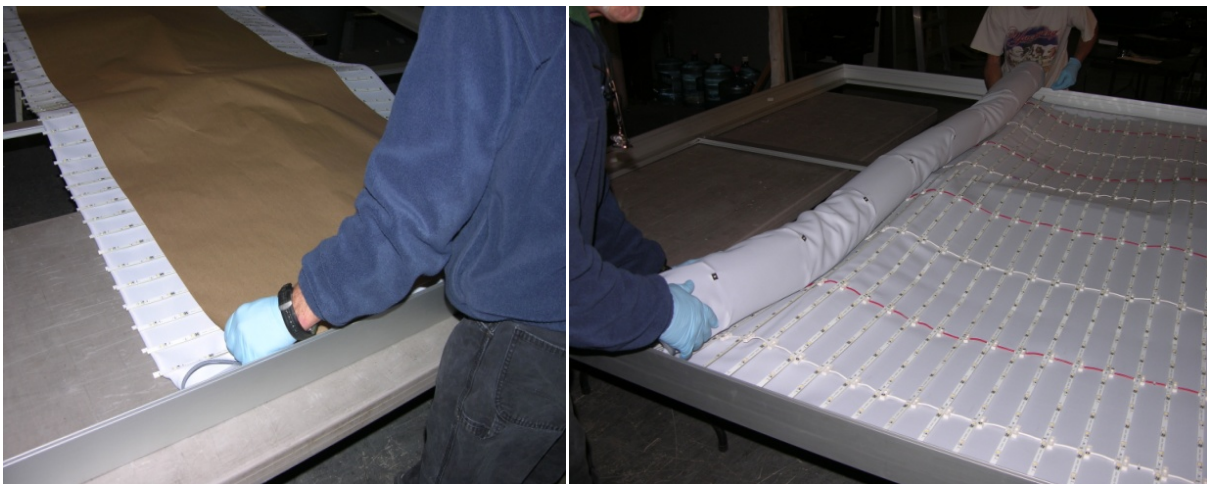


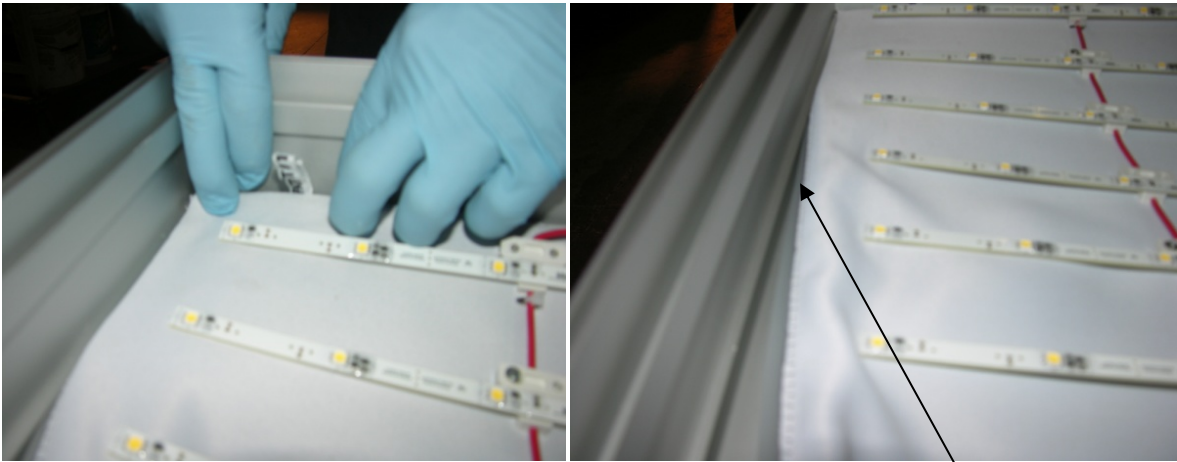
9) Place the LED back blanket in front of the frame & *carefully unroll and layout the fabric LED back panel facing up*. There is a pull tab (with patent number) in the lower right hand corner of the light blanket. The blanket is labeled in each corner for easy location. Start installing the light blanket at the top at both ends first. Make sure you insert the blanket into the correct groove as shown in the illustration below. Then move to the center of the frame and insert the gasket and start moving out towards the edges.

This process may take at two people inserting the silicone into the groove, while others are holding the LED blanket to ensure the LED strips to not tangle and break. **USE EXTREME CAUTION WHEN HANDLING THE LIGHT BLANKET TO AVOID BREAKING LED STRIPS.** See photos below. Three extra LED strips and one power supply were included with the shipment in case of damage or failure.

10) NOTE: Leave the bottom middle section of the light blanket unsecured to allow wiring connections to the power supplies.

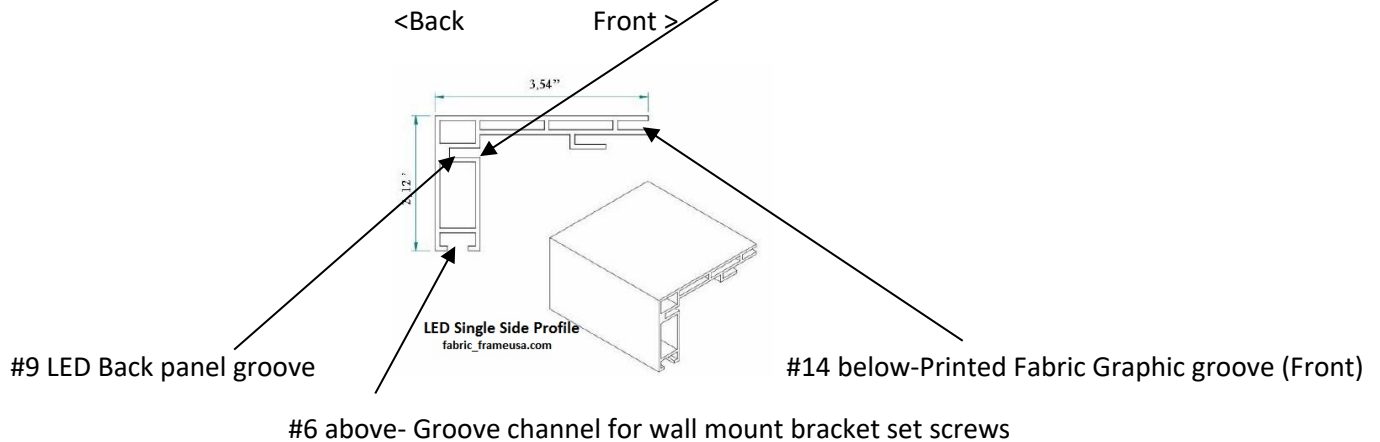
11) Starting in each corner, gently insert the gasket edging into the frame groove on the inside back edge of the frame (see illustration below). Insert all 4 corners in both directions about 24". Then move to the middle of the fabric panel and insert the silicone gasket into the middle sections working out to the corners. Make sure not to pull or stretch the fabric which will lead to wrinkles and poor fit in the frame.





Light blanket installation into the back groove of the frame.

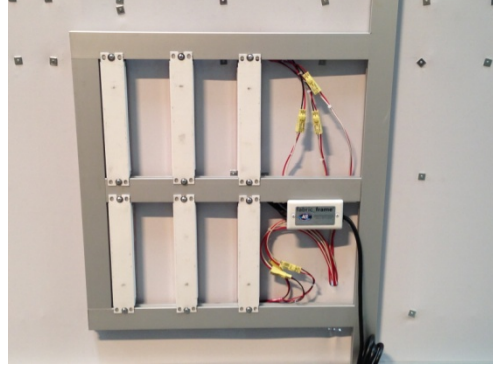
Fabric Installation Illustration



12) Power must be off before completing this step. Install the power supply rack on the back side lower right hand corner using hex wrench provided. Match up and plug the wires together (**red wires to red wires; black wires to white wires**) matching wires as labeled. **Do not plug into power cord until the final assembly is complete.** Run wires down through the frame in hole where you mount the timer (see below). Connect the wires in the back of the timer and set parameters on timer to desired run times.



Power supply rack for large frames

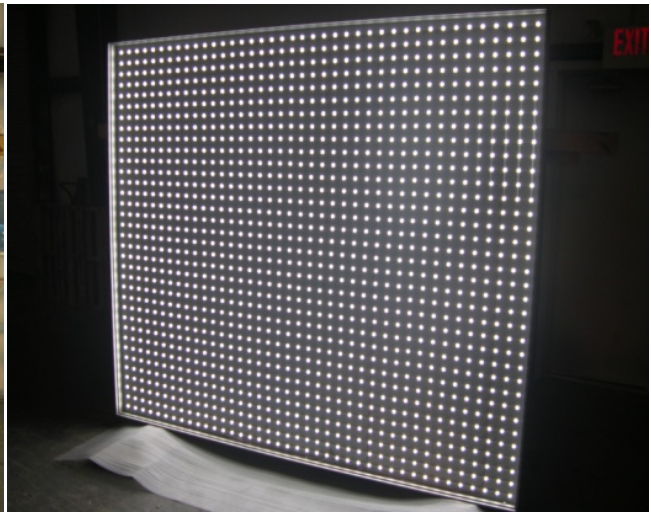


Power supply racks (typical)

Carefully plug in connectors completely and make sure to properly insert the connectors- male/female.

All connectors should snap into place ensuring proper connection- male/female.

13) Carefully inspect the LED lattice inside to see that all lattice is laying straight and flat against the fabric panel. Some adjustments to the lattice may be necessary due to shifting in unpacking and installation. **The LED lattice must lay flat and even to ensure proper lighting of the graphic. It is recommended that you power up the LEDs at this point to ensure all diodes come on. If there is a problem, recheck all connections until all LEDs light up.**



Above- Front view of completed installed LED backlight panels

14) Finally, install the main front graphic image (Supplied by others) (follow installation guide provided with graphic package). This large graphic will require two people to hold the graphic and install it across the top of the frame first, starting with one person in the middle, one person at each end. Install the top corners in both directions around 24". Install the top center and work your way out to the edges, **being sure to push the silicone straight into the groove to avoid waves and wrinkles.** At the same time, someone else can insert the bottom corners and repeat the process across the bottom, then the two sides, starting in the middle and working your way out to the edges, being careful not to pull or stretch the graphic which leads to wrinkles. The light blanket will pull tight to fit into the frame, but has been sized to fit this frame.

IMPORTANT: clean hands are essential to avoid getting dirt or debris on the graphic panel. You are encouraged to wear the protective gloves to avoid contaminating the fabric.

15) Plug in to 110v power plug and you're done!