

Insert Installation Instructions

Important! Before you start:

*Clean your hands thoroughly to prevent contamination of the fabric insert.
(Call us to order cleaner if necessary)*

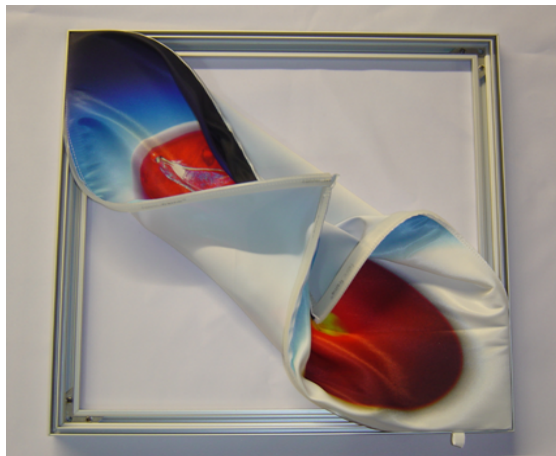
Inserts have a gasket sewn on the *back side edge* as shown below:



Step 1- Install fabric *front side* in one corner as shown below: (6-8" each way)



Step 2- Repeat the process in the other corners, being careful not to stretch the fabric out of shape.



Porsche CPO Fabric Graphic Display

Step 3- Finish installing the remaining corners as shown below: **DO NOT STRETCH THE FABRIC LEADING TO FIT PROBLEMS!**



Step 4- Starting at the midpoint on each side, tuck the fabric straight in going from the middle to each corner to ensure a smooth finished look. Make sure all fabric is completely inserted into the frame groove.

